

Network Protocol Topology Generator Guide

How to use it?

Step1:

Install Wireshark

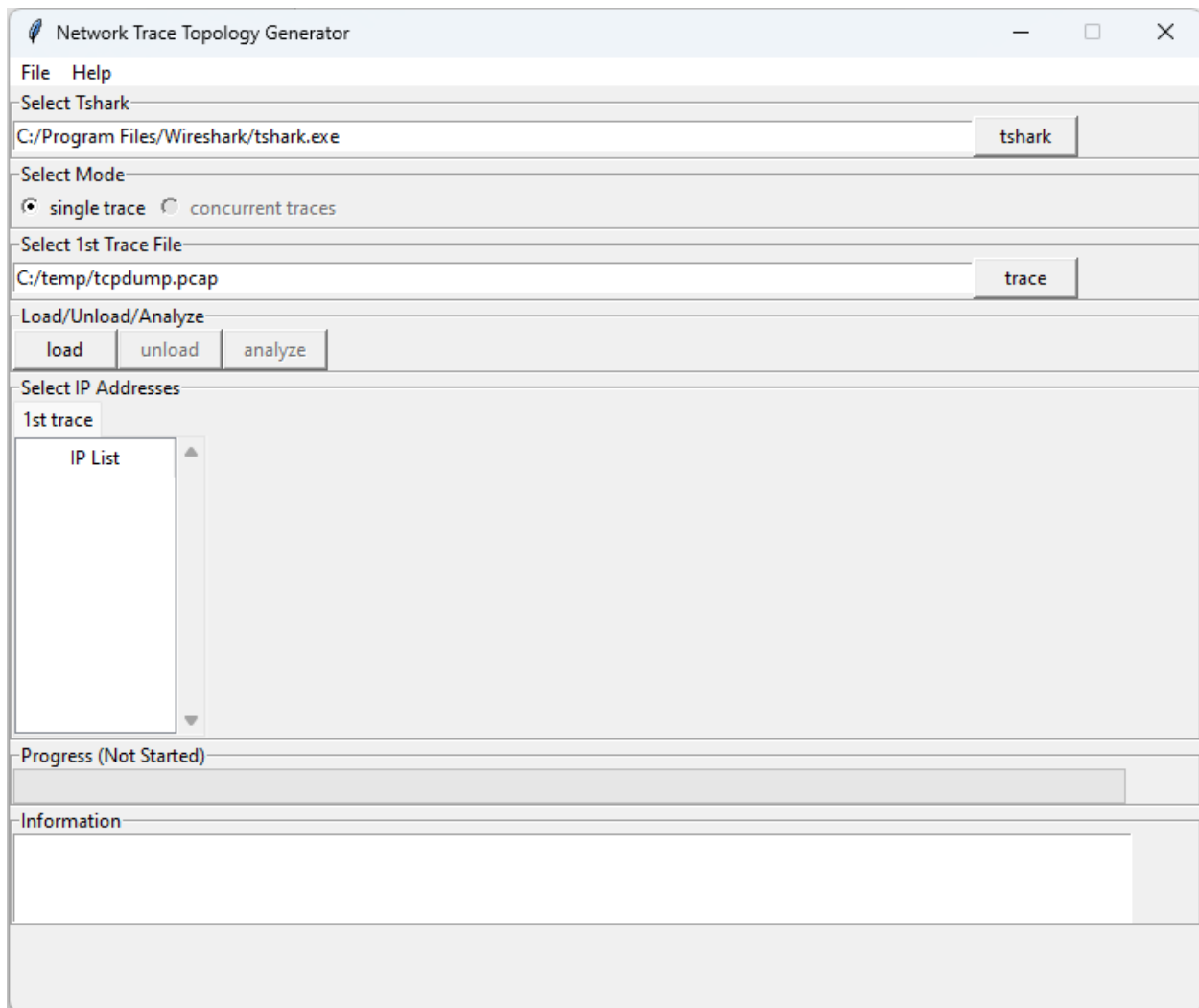
[Wireshark • Go Deep](#)

Step2:

Run the program directly

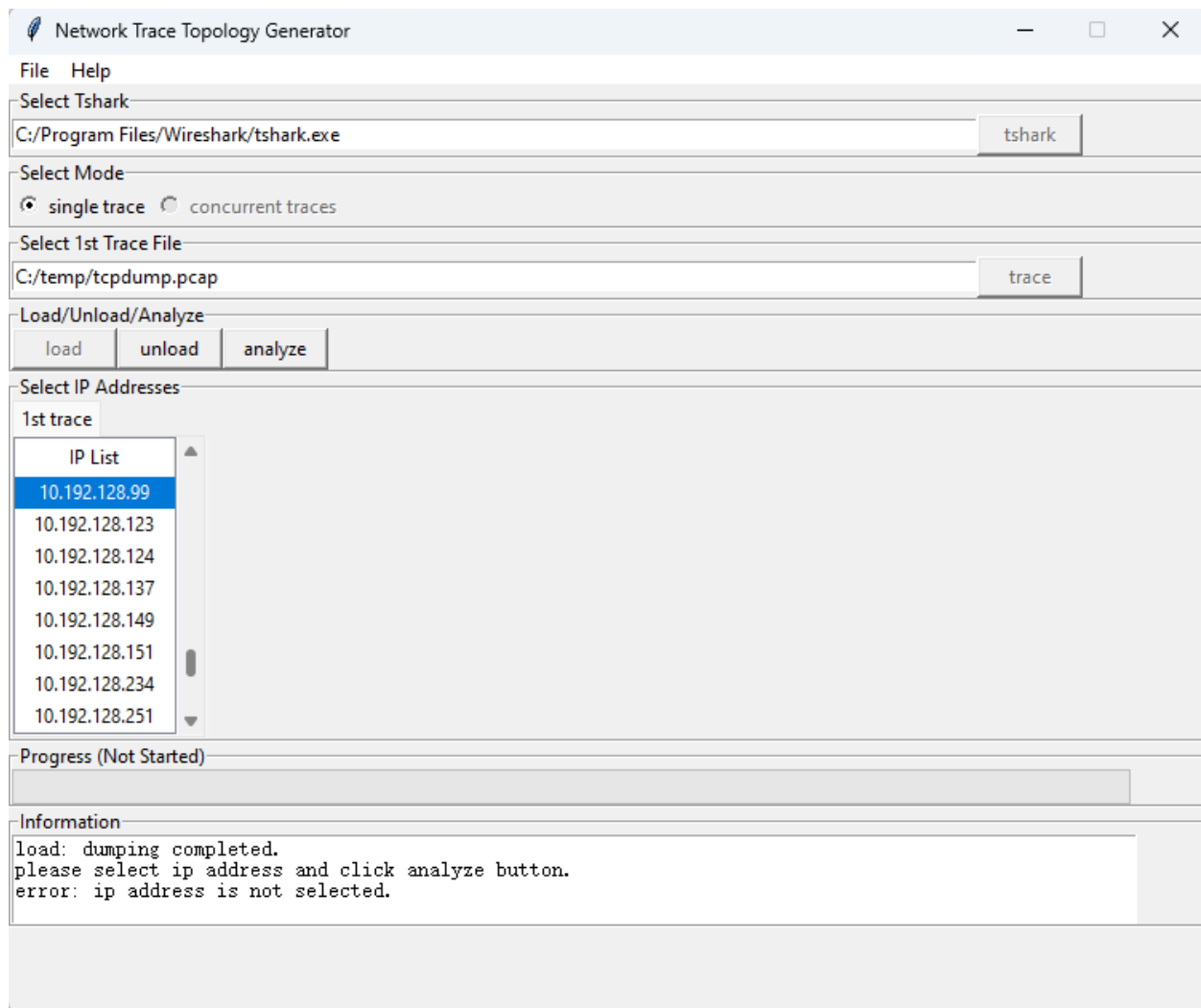
Select TShark program (TShark is the command-line equivalent of the network protocol analyzer Wireshark)

Select the network trace file for which topology needs to be generated



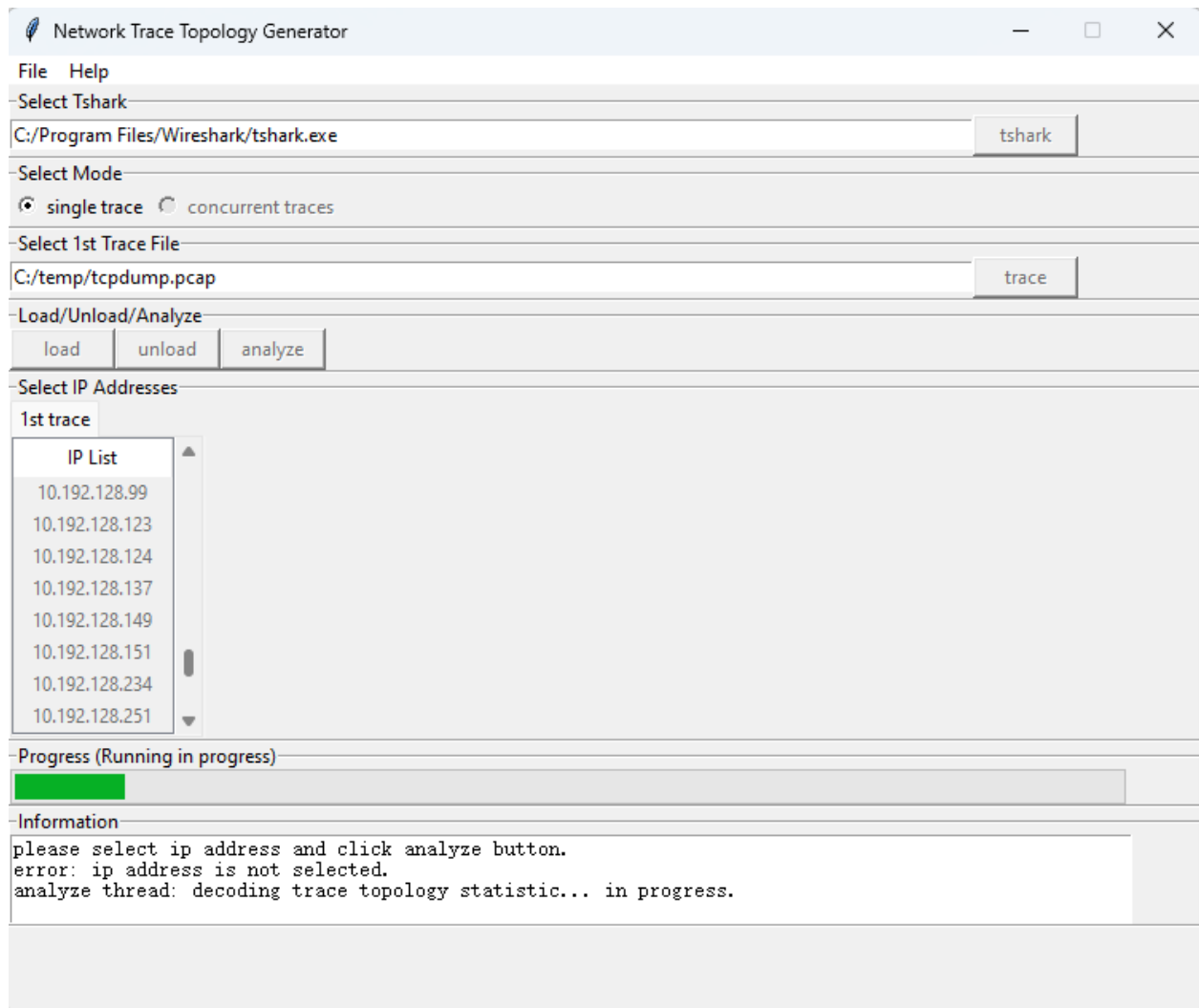
Step3:

Click the load button and wait for a while. Loading time may range from several minutes to more than ten minutes. If the network packet file is very large and there are huge number of IP addresses, it may take longer.



Step 4

Select the IP address of the host where the packet is being captured. If the packet is being captured from a network device such as a firewall or switch, you can randomly select an IP address. Then click analyze button.





Step 5

The topology file will be generated in the same directory as the network trace file.

> temp

Sort View ...

<input type="checkbox"/>	Name	Date modified	Type	Size
<input type="checkbox"/>	 trace_inside_topology_html_report_17...	2025/9/4 12:36	Microsoft Edge H...	155 KB
<input type="checkbox"/>	 tcpdump.pcap	2019/9/6 13:51	Wireshark capture...	195,314 KB